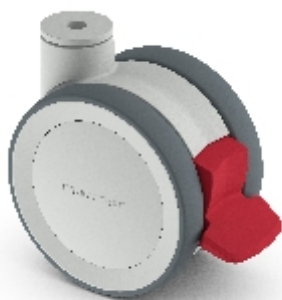








Swivel castor with total brake mounted behind:

305011 (TWIST)

 manner



Technical data

Diameter		125 mm
Tread width		2x20 (81) mm
Height		143 mm
Bolt hole diameter		10 mm
Brake swivel radius		133 mm
Load capacity		125 kg

Technical description

TWIST plastic twin wheel castor

fork is made of glass fiber-reinforced polyamide

maintenance-free construction

Fittings: 10 und 12 mm bolt hole and top plate

on request also available with other wheel variants and lower overall height



Wheel

polyurethane tyre (Shore A 95)

glass fiber-reinforced polyamide wheel centre

ball bearing