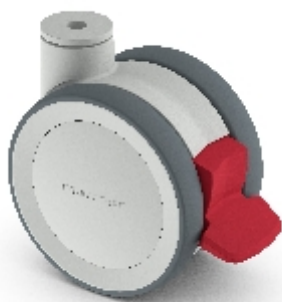



Swivel castor with total brake mounted behind:

305131 (TWIST)

 manner



Technical data

Diameter		100 mm
Tread width		2x20 (81) mm
Height		118 mm
Bolt hole diameter		10 mm
Brake swivel radius		113 mm
Load capacity		125 kg



Wheel

polyurethane tyre (Shore A 95)

glass fiber-reinforced polyamide wheel centre

ball bearing